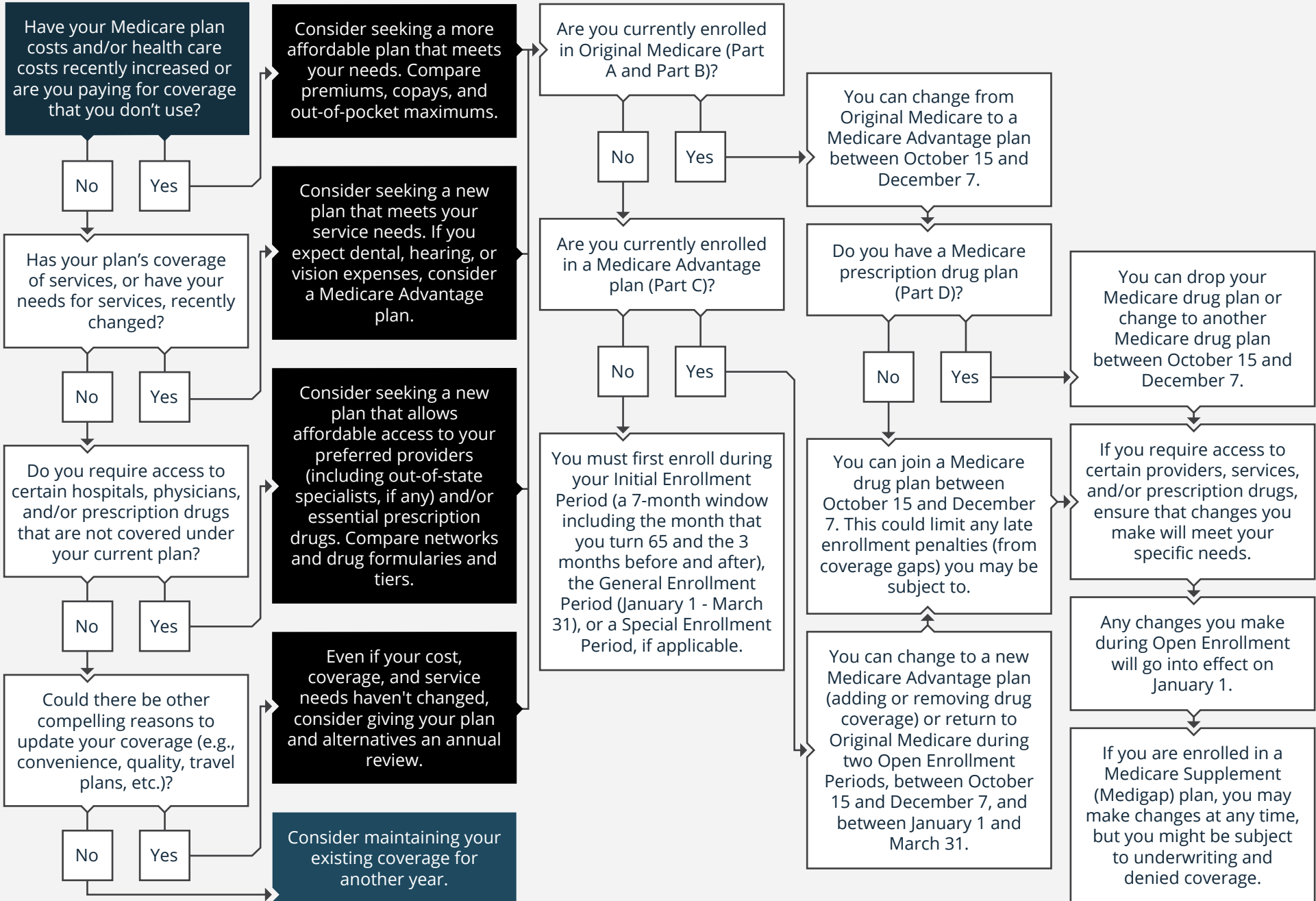


# 2023 · SHOULD I CHANGE MY MEDICARE COVERAGE DURING OPEN ENROLLMENT?



**Start Here**





**Notes**



**Jenifer Aronson, Founder/Managing Partner, Mosaic Fi**

250 Parkway Drive, Suite 150 Lincolnshire, Illinois 60069  
jenifer@mosaicfi.com | (773)425-6790 | www.mosaicfi.com